

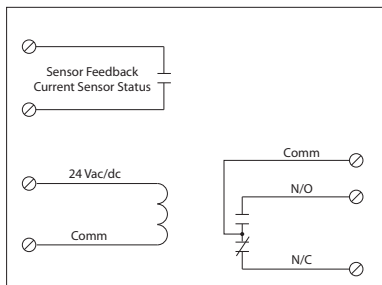
**RELAY & AC CURRENT SWITCH COMBOS**

**RIBMX24 Series**

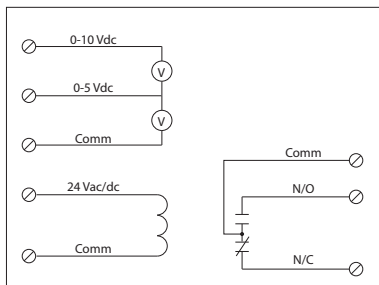
4.00" Track Mount 20 Amp Relay/AC Sensor Combinations, with 24 Vac/dc Coil



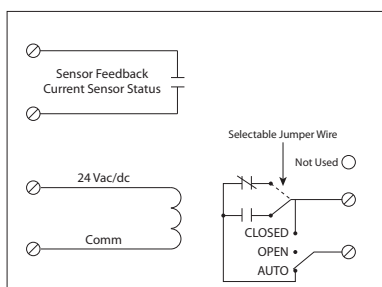
**RIBMX24BA, RIBMX24BF+**



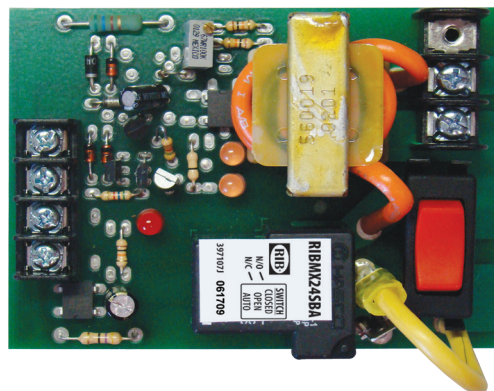
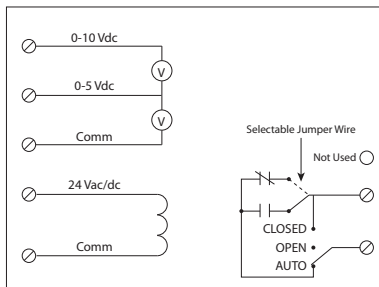
**RIBMX24BV^**



**RIBMX24SBA, RIBMX24SBF+**



**RIBMX24SBV^**



CURRENT SENSORS

**SPECIFICATIONS**

**FUNCTIONAL DEVICES CERTIFIED FOR USE WITH ECMs**

**Expected Relay Life:** 10 million cycles minimum mechanical  
**Operating Temperature:** -30 to 140° F  
**Humidity Range:** 5 to 95% (noncondensing)  
**Operate Time:** 18ms  
**Relay Status:** Red LED On = Activated  
**Dimensions:** 2.95" x 4.00" x 1.25"  
**Track Mount:** 4.000"; See MT4 Series on page 152  
**Approvals:** UL Listed, UL916, UL864, C-UL California State Fire Marshal, CE, RoHS  
**Gold Flash:** No

**Coil Current:**  
 50 mA @ 18 Vac  
 83 mA @ 24 Vac  
 33 mA @ 22 Vdc  
 35 mA @ 24 Vdc  
 47 mA @ 30 Vdc

**Coil Voltage Input:**  
 24 Vac/dc ; 50-60 Hz  
 Drop Out = 3 Vac / 3.8 Vdc  
 Pull In = 18 Vac / 22 Vdc

**Sensor Contact: +**  
 • When current sensor status is off (open), leakage <30 uA @ 30Vac/dc  
 • When current sensor status is on (closed), voltage drop < .3 Vac/dc @ .1 Amp  
 < 1.6 Vac/dc @ .4 Amp

**Sensor Feedback Output: ^**  
 • Voltage output is proportional to current sensor range.  
 • Min. Input Impedance = 30K ohms  
 • Accuracy +/- 1% full scale  
 • Vripple < 10m Vac

**RIBMX24 SERIES SELECTION GUIDE**

Model#	Sensing Range	Type	Threshold	Sensor Output	Resistive	Override Switch	Contact Type	Contact Ratings	Notes
RIBMX24BF <b>ECMs</b>	.50-20 Amps	Internal w/ contact status	Fixed, .50 Amp	Solid State Contact 30 Vac/dc, 0.4 Amp	20 Amp	No	SPDT	20 Amp Resistive @ 277 Vac 20 Amp Ballast @ 277 Vac 16 Amp Electronic Ballast @ 277 Vac (N/O) 10 Amp Tungsten @ 120 Vac (N/O) 1,110 VA Pilot Duty @ 277 Vac 770 VA Pilot Duty @ 120 Vac 240 Watt Tungsten @ 120 Vac (N/C) 2 HP @ 277 Vac 1 HP @ 120 Vac	
RIBMX24BA <b>ECMs</b>	.50-20 Amps	Internal w/ contact status	Adjustable	Solid State Contact 30 Vac/dc, 0.4 Amp	20 Amp	No	SPDT	20 Amp Resistive @ 277 Vac 20 Amp Ballast @ 277 Vac (N/O) 10 Amp Ballast @ 277 Vac (N/C) <i>Not rated for Electronic Ballast</i> 10 Amp Tungsten @ 120 Vac (N/O) 1,110 VA Pilot Duty @ 277 Vac 770 VA Pilot Duty @ 120 Vac 240 Watt Tungsten @ 120 Vac (N/C) 2 HP @ 277 Vac 1 HP @ 120 Vac	
RIBMX24BV	0-20 Amps	Internal w/ voltage output	Analog	0-5 Vdc 0-10 Vdc	20 Amp	No	SPDT	20 Amp Resistive @ 277 Vac 20 Amp Ballast @ 277 Vac (N/O) 10 Amp Ballast @ 277 Vac (N/C) <i>Not rated for Electronic Ballast</i> 10 Amp Tungsten @ 120 Vac (N/O) 1,110 VA Pilot Duty @ 277 Vac 770 VA Pilot Duty @ 120 Vac 240 Watt Tungsten @ 120 Vac (N/C) 2 HP @ 277 Vac 1 HP @ 120 Vac	
RIBMX24SBF <b>ECMs</b>	.50-20 Amps	Internal w/ contact status	Fixed, .50 Amp	Solid State Contact 30 Vac/dc, 0.4 Amp	20 Amp	Yes	SPST	20 Amp Resistive @ 277 Vac 20 Amp Ballast @ 277 Vac (N/O) 10 Amp Ballast @ 277 Vac (N/C) <i>Not rated for Electronic Ballast</i> 10 Amp Tungsten @ 120 Vac (N/O) 1,110 VA Pilot Duty @ 277 Vac 770 VA Pilot Duty @ 120 Vac 240 Watt Tungsten @ 120 Vac (N/C) 2 HP @ 277 Vac 1 HP @ 120 Vac	• Normally Open or Normally Closed selected by yellow jumper wire
RIBMX24SBA <b>ECMs</b>	.50-20 Amps	Internal w/ contact status	Adjustable	Solid State Contact 30 Vac/dc, 0.4 Amp	20 Amp	Yes	SPST	20 Amp Resistive @ 277 Vac 20 Amp Ballast @ 277 Vac (N/O) 10 Amp Ballast @ 277 Vac (N/C) <i>Not rated for Electronic Ballast</i> 10 Amp Tungsten @ 120 Vac (N/O) 1,110 VA Pilot Duty @ 277 Vac 770 VA Pilot Duty @ 120 Vac 240 Watt Tungsten @ 120 Vac (N/C) 2 HP @ 277 Vac 1 HP @ 120 Vac	
RIBMX24SBV	0-20 Amps	Internal w/ voltage output	Analog	0-5 Vdc 0-10 Vdc	20 Amp	Yes	SPST	20 Amp Resistive @ 277 Vac 20 Amp Ballast @ 277 Vac (N/O) 10 Amp Ballast @ 277 Vac (N/C) <i>Not rated for Electronic Ballast</i> 10 Amp Tungsten @ 120 Vac (N/O) 1,110 VA Pilot Duty @ 277 Vac 770 VA Pilot Duty @ 120 Vac 240 Watt Tungsten @ 120 Vac (N/C) 2 HP @ 277 Vac 1 HP @ 120 Vac	

**ECMs** = FDI Certified for use with electronically commutated motors